

PokerControls™

WIRELESS POKER CONTROLLER V.1

SETUP GUIDE

STEP 1 - OPEN BOX & REMOVE CONTENTS

Open the box using the one of the flaps on either side, then slide out the inner tray.



Open the flaps to reveal the inner box



Slide out the inner box

Then you can open the inner tray using the front flap (see below)



Peel open the front flap of the inner tray



The box contains the following items:

- Wireless Poker Controller
- USB Receiver
- 3 x AA Batteries
- USB Cable
- CD & Activation Sticker
- Quick Setup Guide



Wireless Poker Controller



3 x AA Batteries



Quick Setup Guide



USB Receiver



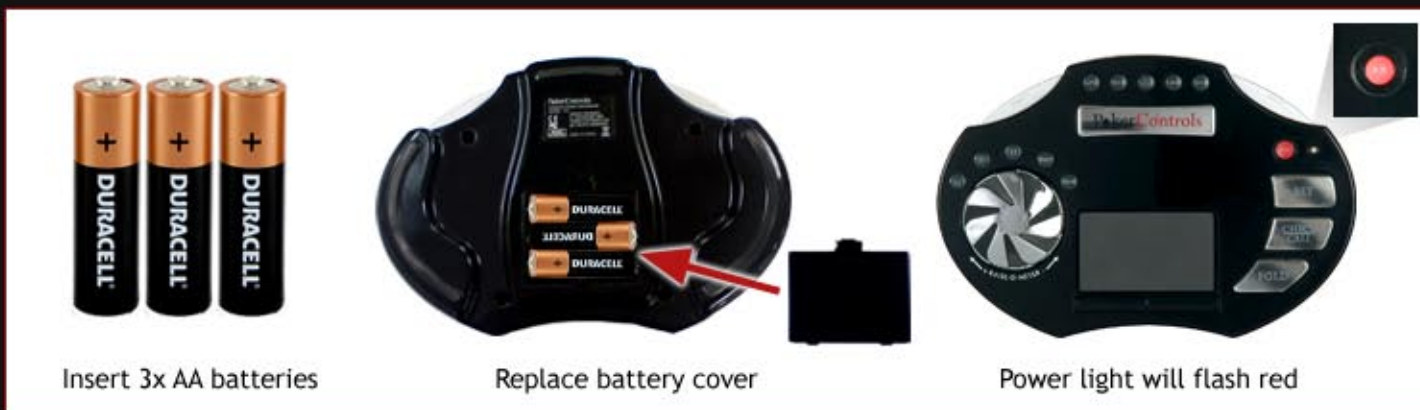
USB Cable



CD & Activation Sticker

STEP 2 - INSERT BATTERIES & POWER ON

Remove battery cover and 3 AA batteries as illustrated. (The power light on the Poker Controller will go RED for 2 seconds and then will go off again to show the batteries have been inserted correctly).



Insert 3x AA batteries

Replace battery cover

Power light will flash red

Then turn the Poker Controller power ON by moving the ON/OFF switch located under the mouse pad of the Poker Controller to the ON position.

(The Poker Controller power light will flash RED again for 5 seconds and turn off, this is a self test and the Poker Controller will now be in STANDBY MODE)

- See step 11 for more information on STANDBY mode



Turn Poker Controller ON

When you are ready to fully turn ON the Poker Controller, press in the large silver POKER CONTROLS button to bring it out of STANDBY mode. The Poker Controller is now ready to be paired as shown below.



Power ON from Standby mode

PLEASE REMEMBER

You **MUST** wait 5 seconds for the self test to complete after inserting new batteries.

If you are having trouble switching ON the Poker Controller, try removing the batteries and replacing them again, but remember to wait the full 5 seconds for the power light to switch ON then OFF without touching any buttons.

To ensure the longevity of your batteries, remember to switch the Poker Controller OFF from the ON/OFF switch when not in use.

STEP 3 - INSERT USB RECEIVER & PAIRING WITH POKER CONTROLLER

Remove the cover from the USB receiver and insert into a spare USB slot on your PC. The light on USB receiver will start flashing RED showing that it is waiting to be paired.



Remove the USB cover



Plug into USB slot and wait for light to flash

In order to pair the Poker Controller with the USB receiver, press the small square 'pairing' button on the USB receiver.



Once the pairing button on the USB has been pressed, the light on the USB receiver will flash RED at a faster rate (this will indicate that it is searching for the Poker Controller)

In order to complete the pairing process, then press the X2 and X3 buttons on the Poker Controller at the same time and let go instantly)

How do you know that you have paired the USB and Poker Controller correctly?

Once the Poker Controller is paired with the USB receiver, the lights on both the USB and the Poker Controller will turn to a constant RED. (This means they have stopped flashing)



The final test to see if you have paired these correctly will be to move your finger along the mouse touchpad on your Poker Controller.

If the mouse touchpad controls your mouse on your screen, you have successfully paired the USB receiver to the Poker Controller.



STEP 4 - OPTIONAL USB CABLE

You can choose to play using the USB cable supplied or using the batteries and USB receiver.

If you have chosen to use the USB cable, you will not need to use the USB receiver as well.



USB Cable means no USB Receiver or Batteries required

To connect using the USB cable, simply plug the USB cable into a USB slot on your PC and the other end into the mini USB slot located above the SIT OUT button on the top of the Poker Controller.



Once connected, the RED power light on the Poker Controller will turn solid RED. Then move your finger along the mouse touch pad on your Poker Controller, and if it controls the mouse you have connected successfully.



PLEASE REMEMBER

You can use 3 x rechargeable AA batteries in your poker controller and when the USB cable is attached, the Poker Controller will slowly trickle charge the batteries. The duration and lifetime of rechargeable batteries will vary according to brand, age and usage.

When the cable is attached via the PC and the Poker Controller is OFF, the power light will flash green every so often to show that the batteries are being recharged.



STEP 5 - DOWNLOAD & ACTIVATE THE SOFTWARE APPLICATION

Once you have paired the Poker controller to your PC (see Step 3) - Please visit: www.pokercontrols.com/software and follow the steps to register, activate and download the latest software version to interact between your Poker Controller and the Poker Room.

In order to locate the activation code required to activate your software for the first time, please see the front of the inner tray, there will be a large red sticker with your unique activation code.



Go to www.Pokercontrols.com/software



Use Activation Code found on inner box

AUTOMATIC SOFTWARE UPDATES;

The Poker Controls Software will automatically check for and install updates each time you use the software. These updates are free of charge and include new poker rooms, new features and functionality.

STEP 6 - RUN THE SOFTWARE

Once you have successfully activated and downloaded the software, locate the POKER CONTROLS software using the start menu:

START > PROGRAMS > POKER CONTROLS

and click on the black Poker Controls Software Application link. This will run the software for you and you can verify this by checking for the small black icon in the bottom right of your screen (the system tray)



Find Program in Start Menu



Poker Controls Software icon in system tray

You will need to run the software every time you want to use the Poker Controller. You can create a shortcut on your desktop if you want to ensure easy access. Once the software is running, you can always check the bottom right hand corner of your screen to see if the black icon is present. This means the software is active and running.



Create a desktop Shortcut

To check for updates, simply right click this icon and click 'exit', then run the software again and it will automatically check for any new updates.

STEP 7 - MAIN MENU, POKER ROOMS & CHANGE SETTINGS

THE MAIN MENU

Once you have switched on your Poker Controller, paired it with the USB (or used the USB cable) and you have installed and run the software, you are ready to begin playing!

To access the MAIN MENU screen, simply press the large silver POKER CONTROLS button once when the Poker Controller is ON and this will bring up the black Poker Controls MAIN MENU Screen. To close the Menu Screen again, simply press the same button once again. (You can open and close the Menu Screen at any time)



Press Large Silver POKER CONTROLS button to open and close the Main Menu



Once the Menu screen is open, you will see a number of Poker Rooms. To begin playing on any of these Poker Rooms, simply select and click on the Poker Room icon either using the Raise-O-Meter (you can click this in to select) or use the Mouse Touchpad to select and click.



If the Poker Room software is installed on your PC, clicking the icon in the MAIN MENU will automatically start this for you. If you do not have it installed, you will be prompted to install it.

Please note: You must have the Poker Room software installed on your PC as well as the Poker Controls Software Application in order to play using the Poker Controller.

CHANGE SETTING

Your TILT lockout is set by default to 60 seconds. You can change the timeframe of the TILT countdown timer in the CHANGE SETTINGS page, simply input your desired number of seconds and then click APPLY and then OK.

Tilt Button Settings

i Increase or decrease the Tilt Settings by turning the Raise-O-Meter to the left or right.

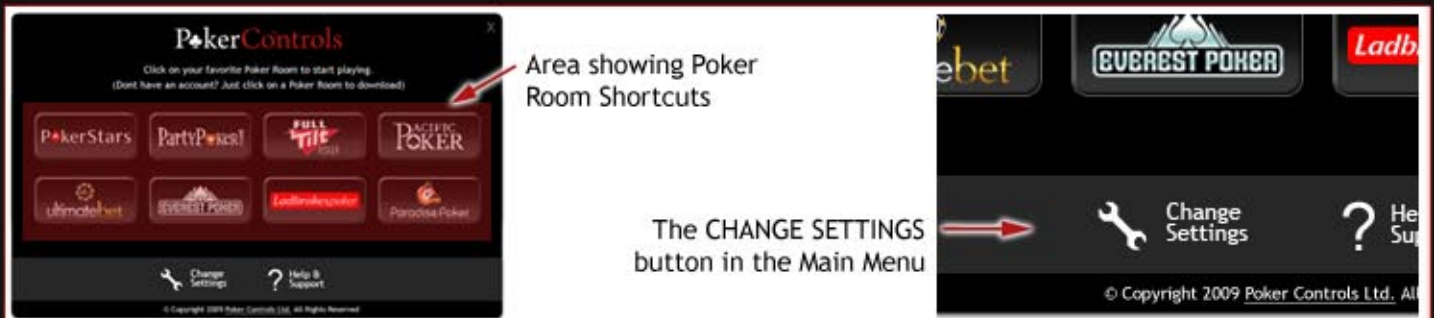
When Tilt button is pressed block any activity for Seconds

Change the countdown timer for the TILT lockout feature

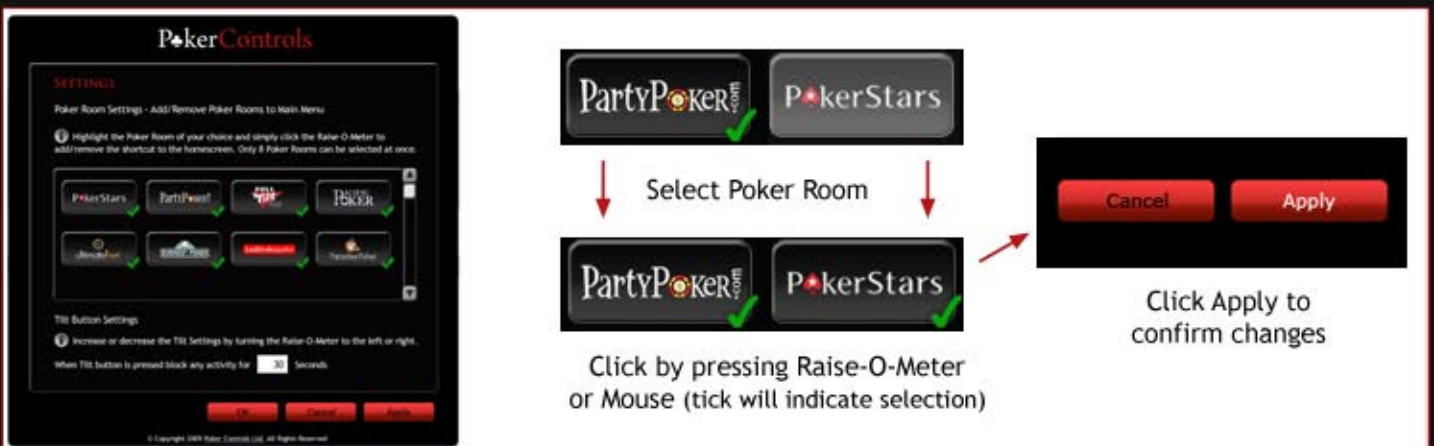
Your TILT countdown time is set by default to 60 seconds. You can change the timeframe of the TILT countdown timer in the CHANGE SETTINGS page, simply input your desired number of seconds and then click APPLY and then OK.

CHANGE DEFAULT POKER ROOMS

You can actually choose and change your default Poker Rooms that will always appear in the MAIN MENU. In order to do this, simply click on the CHANGE SETTINGS button on the MAIN MENU.



Then you will be directed to the SETTINGS page and be able to view and select the Poker Rooms that you want to see when opening the MAIN MENU. To add or remove a Poker Room icon, simply click on the icon, all poker rooms with green tick will appear on your MAIN MENU, up to a maximum of 8 can be shown in the MAIN MENU. Once you have selected the Poker Rooms you want to show, click APPLY, then OK and these will be set for you.



To remove a Poker Room icon from the MAIN MENU, simply un-tick it and click APPLY and it will no longer show in the MAIN MENU screen.

HELP & SUPPORT

If you still have questions on the Wireless Poker Controller, the Poker Controls Software or any other features, you may find answers to your questions here: www.PokerControls.com/support

For any other technical issues, please send an email to Support@PokerControls.com with full details on the technical issue that you are experiencing and a Customer Support representative will assist you further.

STEP 8 - ENTERING A POKER GAME, GAME PLAY & FUNCTIONS

To start playing poker in one of the compatible Poker Room, simply enter the MAIN MENU and click on the desired Poker Room. You can select between Poker Rooms using the Raise-O-Meter, then click the Raise-O-Meter in to select or click using the Mouse Touchpad.

(If the selected poker room is not installed on your computer, it will prompt you to visit the download page of the Poker Room to start the download).



Turn Raise-O-Meter to select Poker Rooms

Push Raise-O-Meter In to click



If the Poker Room software is already installed on your PC, then clicking on the Poker Room icon in the MAIN MENU will automatically launch the software.

Once in the lobby, you can use the Mouse Touchpad to navigate to a poker game. Once you have chosen the game you want to play, double click to open the game window and click again on an available seat to sit down and play.

(For Ring/Cash Games you can use the Raise-O-Meter to toggle the amount of the buy-in screen)

POKER CONTROLLER FEATURES

- APB - Auto Post Blind (Ring Games Only)
- WBB - Wait for Big Blind (Ring Games Only)
- SIT OUT - Sit in & Out of the Game
- LOBBY - Opens the Lobby Window
- ENTER - To press ENTER or OK for system messages



- X2 - Times current bet amount by two
- X3 - Times current bet amount by three
- X5 - Times current bet amount by five
- POT - Times the bet to the amount in the pot
- ALL-IN - Puts all your remaining chips in play

SWITCH TABLE (L)
Moves to the table/game window to the left



SWITCH TABLE (R)
Moves to the table/game window to the right



RAISE-O-METER
Alters the bet (+/-) by increments of the big blind



TILT
Locks you out of all games for a preset amount of time

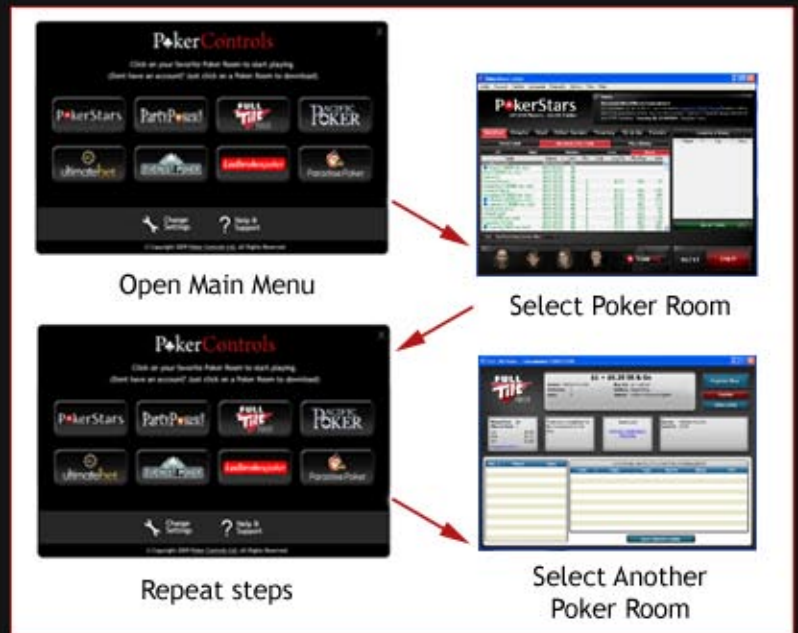


STEP 9 - MULTIPLE GAMES & SCREENS (CROSS POKER ROOM COMPATIBLE)

The Poker Controller enables you to play across different Poker Room at the same time so long as they are Poker Rooms that are compatible with the Poker Controller.

To play on more than one Poker Room at any time, simply open the MAIN MENU and click on the Poker Room you wish to play in.

Once the Poker Room is loaded and you are sitting at a table, open the MAIN MENU again and select another Poker Room and follow the same procedure.



When your table is selected, the Poker Controller Software will indicate that the table is active. You should see a red stroke round the table with a TABLE IN PLAY graphic on the top right hand corner



Once the two Poker Rooms are open and you are playing games in each Poker Room, you can freely switch between game windows by pressing the TABLE (L) and TABLE (R) buttons on the top 2 corners of the Poker Controller.

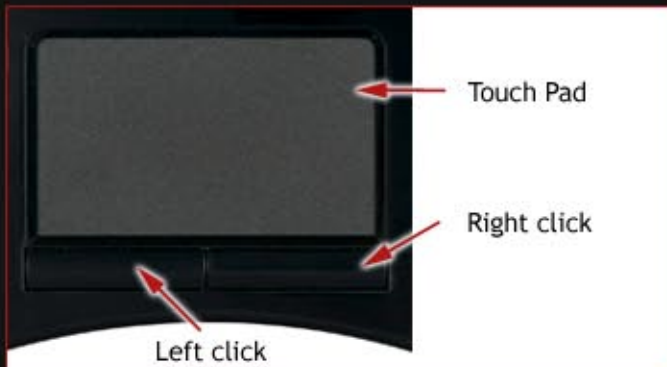


Each time you press the TABLE (L) or TABLE (R) buttons they will switch to the next available game window on the left or the right, dependant on which order they were opened.

STEP 10 - MOUSE TOUCH PAD

The Mouse Touch Pad will work in parallel to your normal mouse. The Mouse Touchpad has Left and Right buttons to click as with any conventional mouse and a flat touchpad to move your finger along similar to those on most laptops.

The Mouse Touchpad has been provided to ensure you can browse through the Poker Room lobby with ease and access any additional menu items.



As mentioned above, the Mouse Touchpad will work at the same time as your normal mouse and you do not need to remove or detach your mouse whilst using the Poker Controller or the Mouse Touchpad.

STEP 11 - STANDBY MODE

The Poker Controller has been designed with a sleep/standby mode to ensure that you do not use waste battery power.

The Poker Controller will automatically go into standby mode when it has been inactive for 10 minutes. (inactive means you have not pressed any buttons for 10 minutes)

To bring the Poker Controller out of standby mode, simply press on the POKER CONTROLS button once and it will switch back ON.



Please note: Whilst in Standby mode, the Poker Controller will require battery power to be ready to be switched ON and over time this will reduce the life of your batteries. If you are not using the Poker Controller for a long time, we strongly suggest switching it OFF fully via the ON/OFF switch.